

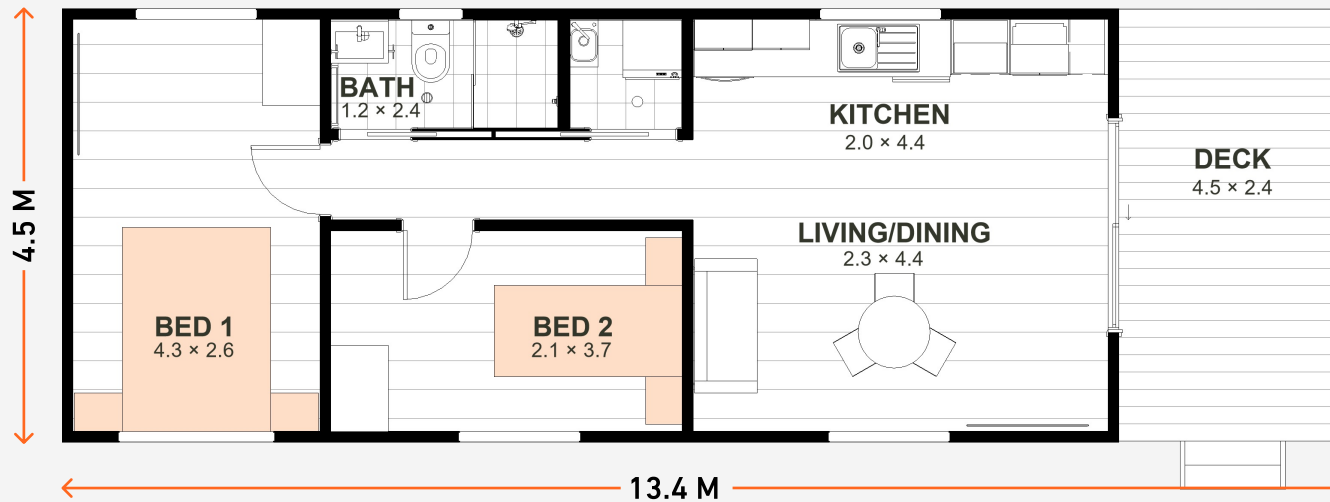


THE CYPRESS 21.

🛏️ 2 🚿 1 📏 13.4 M x 4.5 M

This design redefines comfortable living with a spacious layout, a well defined kitchen with a laundry area, and a large deck for enjoying the outdoors.

- ✓ Up To 4 Heads On Pillows
- ✓ Large Open Plan Living Area
- ✓ Long 4.4m X 2.0m Kitchen
- ✓ Full Width Shower
- ✓ 4.5m X 2.4m Covered Deck



A REAL NIGHT'S SLEEP



BUILT TOUGH FOR LIFE



RAPID FULFILMENT

CALL US: 1300 59 59 31



SCAN ME

ARUYA
MODULAR