

# HOW TO CHOOSE THE RIGHT ACCOMMODATION UNIT: UNDERSTANDING ZONE-BASED DESIGN

Struggling to choose the right modular accommodation unit? Learn how zone-based design impacts functionality & find the best layout for your needs.

 Published: February 3, 2025

Picking the right accommodation unit isn't just about counting bedrooms. It's about how the space works — for the people living in it and the land it's sitting on.

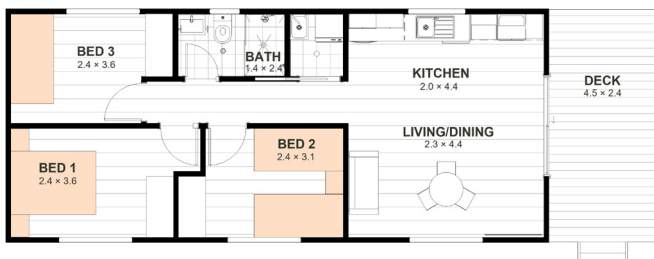
At Aruva Modular, we don't do guesswork. Our zone-based designs are built for real life—whether it's worker accommodation, family living, or a rental setup.

Think beyond floorplans. The magic is in how the key zones connect:

- **Cooking zone** – Tucked away or front and centre?
- **Living zone** – Open-plan for socialising or separated for quiet?
- **Sleeping zones** – Close together or spaced out for privacy?
- **Outdoor integration** – Does a deck or alfresco space matter?
- **Wet areas** – Is the bathroom and laundry easy to access?

Let's put this to the test with two of our most popular designs—the **Cypress 31XL** and the **Spotted Gum 41** and see how layout changes *everything*.

## Cypress 31XL: Outdoor Living & Privacy in One Smart Design



### Best for:

- People who love outdoor space—whether for entertaining or just unwinding.

- Accommodation setups where social and private areas need clear separation.
- Properties where an end-positioned deck makes sense for the land.

### What makes it work:

- **Outdoor-first design** – A large deck sits at one end, blending seamlessly into the living space.
- **Open-plan living & cooking** – The living zone flows straight from the outdoor area, with the kitchen neatly positioned off to the side.
- **Private bedroom wing** – All three bedrooms are at the opposite end, keeping social noise at bay.
- **Wet area as a buffer** – The bathroom and laundry naturally separate living and sleeping zones.

### Who's this for?

- Families or workers who want a dedicated space to relax outdoors.
- Properties with a view—where an alfresco area makes the most of it.
- Those who need clear separation between work and rest.

See the full Cypress 31XL layout [here](#).

## Spotted Gum 41: The Balanced All-Rounder for Shared & Private Living



## Best for:

- Those who want a centralised living space with easy access from all areas.
- Accommodation where outdoor space isn't the focus.
- Multi-occupant setups where privacy between sleeping zones matters.

## What makes it work:

- **Side-entry layout** – No dedicated deck, just a smart, space-efficient entry.
- **Living at the centre** – The open-plan living zone acts as the heart of the home, easily accessible from both bedroom wings.
- **Kitchen positioned at the back** – Keeps the cooking area practical and out of the way.
- **Two separate bedroom zones** – Bedrooms are spread across either side, giving everyone their own space.
- **Efficient wet areas** – Bathrooms and laundry are close to the bedrooms for ease of use.

## Who's this for?


- Multi-occupant setups—where separate sleeping zones matter.
- Sites where a side-entry design makes better use of space.
- Those who want a fully indoor-focused living setup.


See the full Spotted Gum 41 layout [here](#).

## Which Layout Works Best for You?

- **How will the space be used?** Do you need outdoor living, or is an efficient indoor layout more practical?
- **Who will be staying in the unit?** Will it house workers, a family, or multiple people needing privacy?
- **What suits your site?** Is there room for a deck, or does a side-entry design work better?



 1300 59 59 31

 info@aruva.au

 5 Sunny Bank Road, Lisarow NSW 2250

 Futurebuild Group Pty Ltd. ABN: 98 150 296 558

At **Aruva Modular**, we build with *purpose*—so every space is practical, comfortable, and built to last.

Because when a place is designed *right*, it pays back in ease of use, better living, and a good night's sleep.

Still unsure? Let's work it out together

Contact us today or explore our full range at <https://www.aruva.au/designs/>.

